

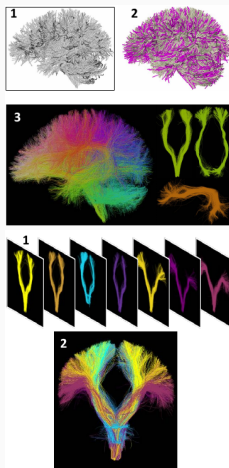
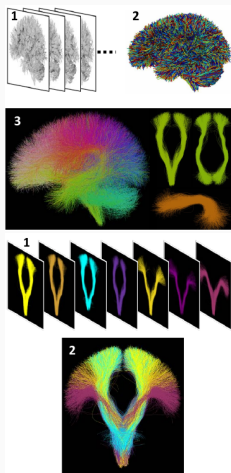
Fibers Bundles Registration and Anatomical Consistency

Pierre Roussillon

January 7, 2019

Télécom ParisTech

Motivation

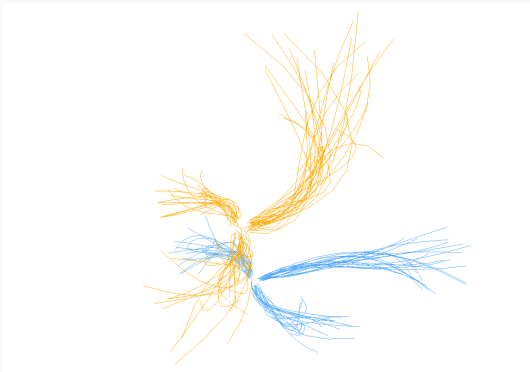


Images from (Zhang 2018)

How to register fibers ?

- Matching as a variational problem:

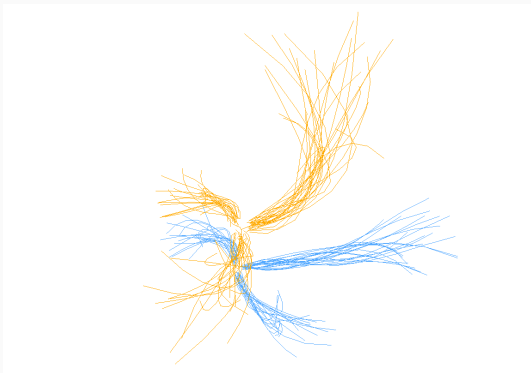
$$\inf_{\varphi} J(\varphi) = \underbrace{E(\varphi)}_{\text{energy of the deformation}} + \underbrace{A(\varphi.m_0, m_1)}_{\text{residual distance}}$$



How to register fibers ?

- Matching as a variational problem:

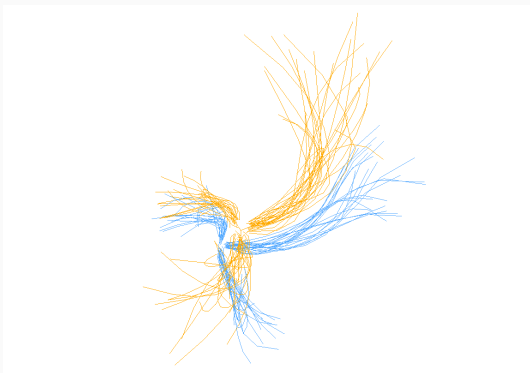
$$\inf_{\varphi} J(\varphi) = \underbrace{E(\varphi)}_{\text{energy of the deformation}} + \underbrace{A(\varphi.m_0, m_1)}_{\text{residual distance}}$$



How to register fibers ?

- Matching as a variational problem:

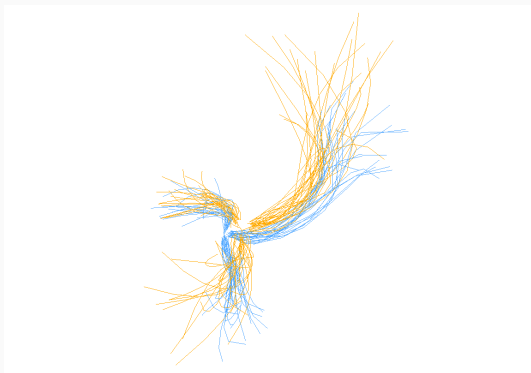
$$\inf_{\varphi} J(\varphi) = \underbrace{E(\varphi)}_{\text{energy of the deformation}} + \underbrace{A(\varphi.m_0, m_1)}_{\text{residual distance}}$$



How to register fibers ?

- Matching as a variational problem:

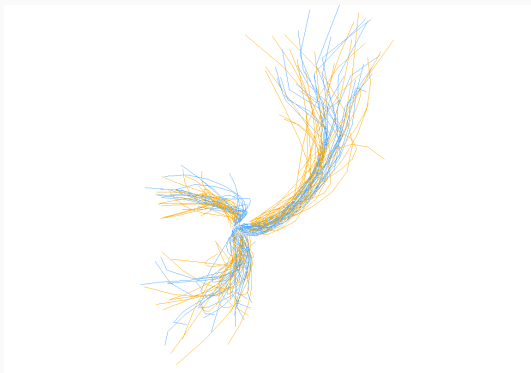
$$\inf_{\varphi} J(\varphi) = \underbrace{E(\varphi)}_{\text{energy of the deformation}} + \underbrace{A(\varphi.m_0, m_1)}_{\text{residual distance}}$$



How to register fibers ?

- Matching as a variational problem:

$$\inf_{\varphi} J(\varphi) = \underbrace{E(\varphi)}_{\text{energy of the deformation}} + \underbrace{A(\varphi.m_0, m_1)}_{\text{residual distance}}$$



Defining A (data-attachment term on fibers)

$$\langle q, q' \rangle = \sum_{i=1}^n \sum_{j=1}^m k_p(c_i, d_j) \langle f_j, g_j \rangle$$
$$\|q - q'\|^2 = \|q\|^2 + \|q'\|^2 - 2 \langle q, q' \rangle$$

Defining A (data-attachment term on fibers)

$$\langle q, q' \rangle = \sum_{i=1}^n \sum_{j=1}^m k_p(c_i, d_j) \langle f_j, g_j \rangle$$
$$\|q - q'\|^2 = \|q\|^2 + \|q'\|^2 - 2 \langle q, q' \rangle$$

- No correspondance between points and between fibers

Defining A (data-attachment term on fibers)

$$\langle q, q' \rangle = \sum_{i=1}^n \sum_{j=1}^m k_p(c_i, d_j) \langle f_j, g_j \rangle$$
$$\|q - q'\|^2 = \|q\|^2 + \|q'\|^2 - 2 \langle q, q' \rangle$$

- No correspondance between points and between fibers
- Do we want to consider a fiber orthogonal to all fibers ?